

## Rabbit Anti-Complement C3d fragment Polyclonal Antibody DATASHEET

**Host:**Rabbit

**Target Protein:**Complement C3d fragment

**IR:**Immunogen Range:1002-1100/1663

**Clonality:**Polyclonal

**Isotype:**IgG

**Entrez Gene:**[718](#)

**Swiss Prot:**[P01024](#)

**Source:**KLH conjugated synthetic peptide derived from human Complement C3d fragment:1002-1100/1663

**Purification:**affinity purified by Protein A

**Storage:**0.01M TBS(pH7.4) with 1% BSA, 0.03% Proclin300 and 50% Glycerol. Shipped at 4°C. Store at -20 °C for one year. Avoid repeated freeze/thaw cycles.

**Background:**The complement factor C3 consists of an alpha and a beta chain. C3 is a central factor in the complement cascade. It is central to the alternative pathway that leads to the C3 convertase C3bBb. The classical mannose binding lectin activation pathway leads to the C3 convertase C4b2a. These convertases cleave C3 resulting in C3a and C3b. Further degradation leads to the formation of the alpha chain products C3d, C3g and C3c. C3 is an acute phase protein that is produced by a wide range of tissues, including renal epithelial cells and hepatocytes.

**Size:**50ul

**Concentration:**1mg/ml

**Applications:**WB(1:500-2000)

ELISA(1:5000-10000)

IHC-P(1:100-500)

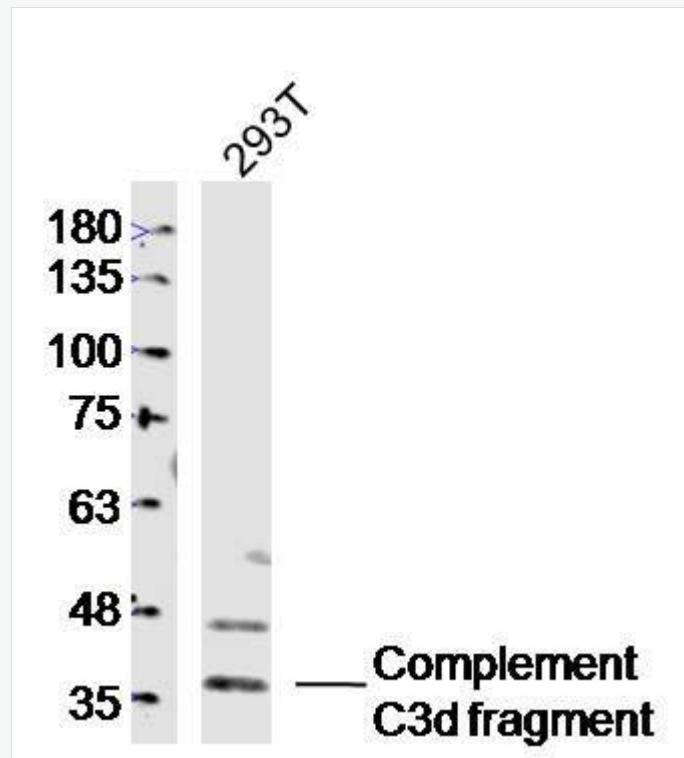
IHC-F(1:100-500)

IF(1:100-500)

**Cross Reactive Species:**Human

For research use only. Not intended for diagnostic or therapeutic use.

## VALIDATION IMAGES



Sample:293T (Human)Cell Lysate at 40 ug

Primary: Anti-Complement C3d fragment(bs-4877R)at 1/300 dilution

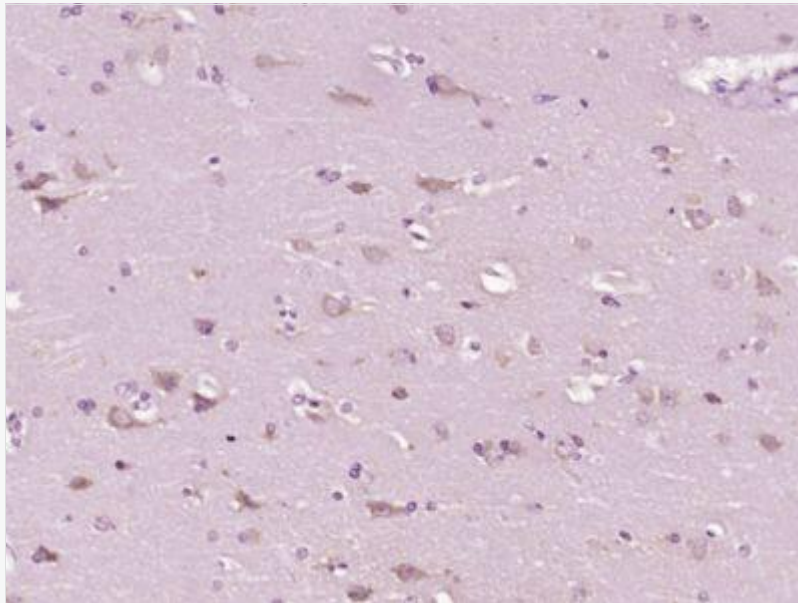
Secondary: IRDye800CW Goat Anti-RabbitIgG at 1/20000 dilution

Predicted band size: 33'109'181kD

Observed band size: 33 kD



**上海晶抗生物工程有民公司**  
SHANGHAI JINGKANG BIOENGINEERING CO., LTD.



Paraformaldehyde-fixed, paraffin embedded (Human brain glioma); Antigen retrieval by boiling in sodium citrate buffer (pH6.0) for 15min; Block endogenous peroxidase by 3% hydrogen peroxide for 20 minutes; Blocking buffer (normal goat serum) at 37°C for 30min; Antibody incubation with (Complement C3d fragment) Polyclonal Antibody, Unconjugated (bs-4877R) at 1:400 overnight at 4°C, followed by operating according to SP Kit(Rabbit) (sp-0023) instructions and DAB staining.